



A gentle breeze blows in our home.

# Kamome fan

かもめふあん

Oh, you flatter me.



I love kamomefan, it  
always nice to me.



## A gentle breeze blows in our home



A wind sends seeds and buds are out in a new land.

Blooming flowers make people's heart sweet.

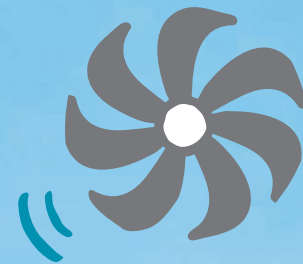
A wind moves rain clouds and rainfall nourishes the earth.

The blessings of wind soften people's heart and make our lives rich.

A cozy breeze always brings us happiness.

When such a breeze blows in our daily lives, it sure to help family even more closely.

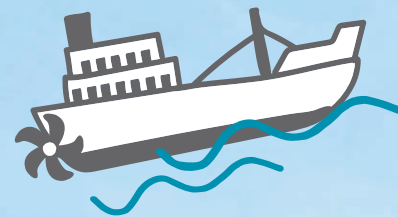
Technologies of Kamomefan



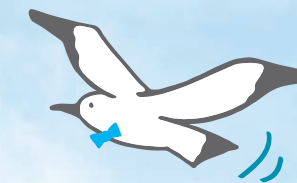
## Ideal wind created by soft blades

Kamomefan blades are made up of soft materials. The curved blades allow airflow is very quiet even lower than the sound of rustling leaves.

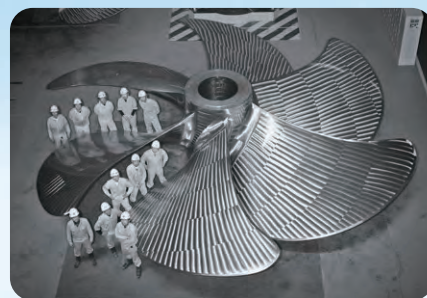
# Live comfortably with gentle and cozy breeze .



Wind of Kamomefan embraces the family softly and gently. The hearts of each other get closer and feel the passage of time in peace.



The propeller technology that propels the ship forward is applied to the fan.

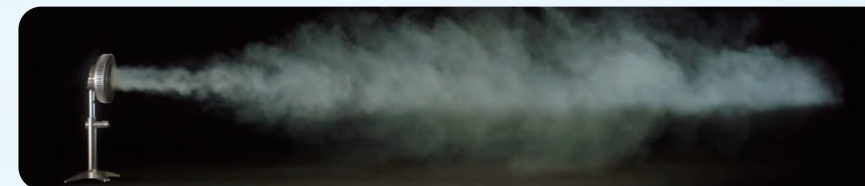


Kamomefan blades are greatly supported by techniques and their world-class craftsmanship of Nakashima Propeller Co., Ltd., which is a ship propeller maker that earns world-top share.

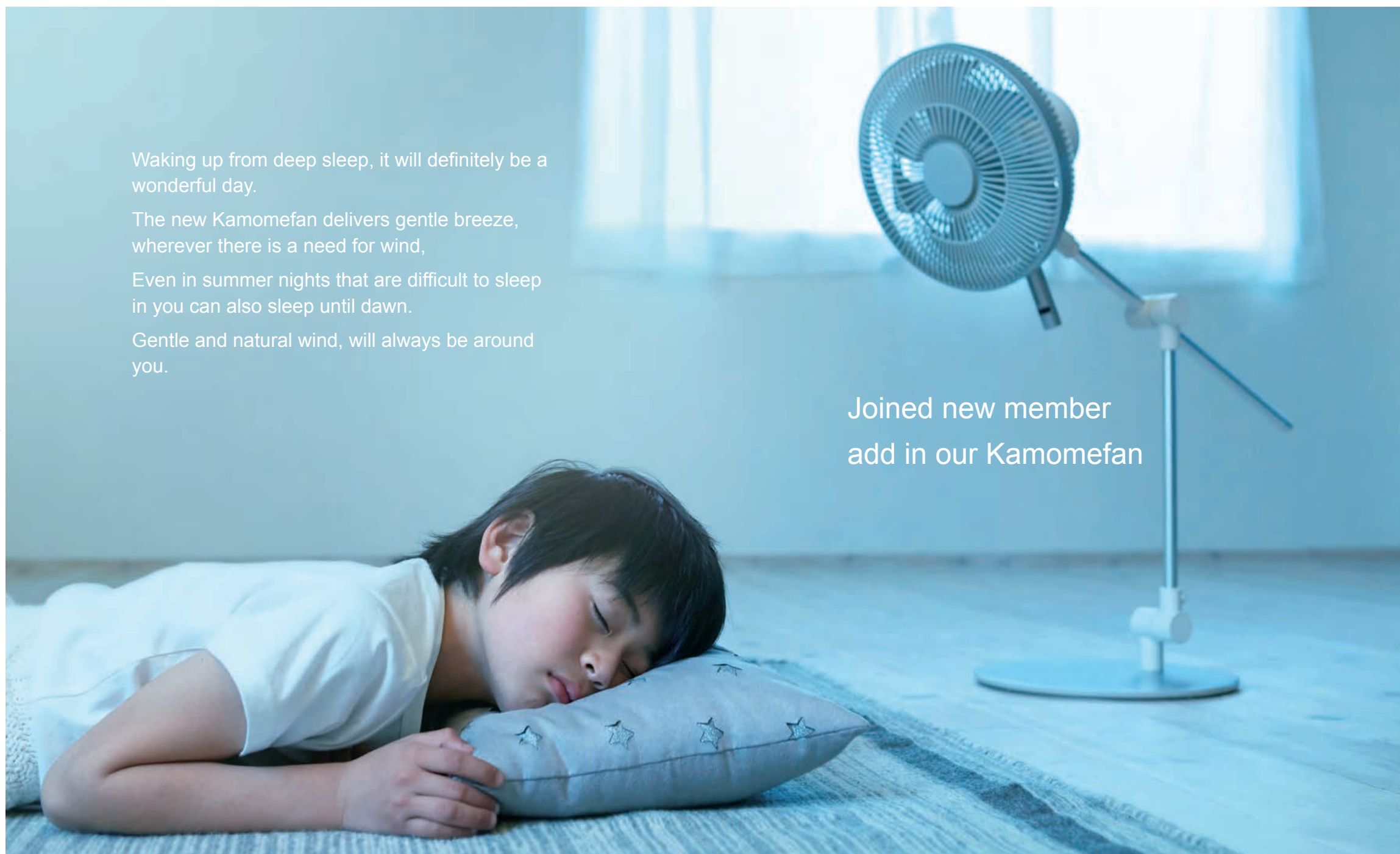
A gentle wind that the pages of book cannot be flip over will cool off your sticky skin smoothly.

The soft breeze blow long-reach using the concept of seagull wings.

The fan blades inspired by seagull wings allow the soft wind to reach far away. Even in the spacious living room, Kamomefan can send gentle breeze in all directions to feel the wind comfort in every corner of the room.







Waking up from deep sleep, it will definitely be a wonderful day.

The new Kamomefan delivers gentle breeze, wherever there is a need for wind,

Even in summer nights that are difficult to sleep in you can also sleep until dawn.

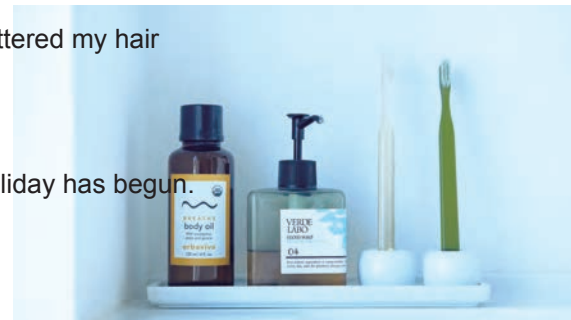
Gentle and natural wind, will always be around you.

Joined new member  
add in our Kamomefan



a.m. 8:00

In this season, I try to go out in the morning while it is cool with my daughter.  
When dressing up, the soft wind coming and fluttered my hair slightly.  
“Mom, I got the fan for you.”  
“Thanks.”  
Comfortable breeze, declares that our happy holiday has begun.



## 01 F series



Blade diameter **Soft blades**

**25cm**

Lowest speed, Highest speed, with oscillation Without oscillation  
Estimated electricity fee for operating 1 hour  
**¥0.05 Yen / 0.41 Yen**

Operating noise: Lowest  
**7.5dB**



Lightweight  
Convenient handling



Champagne gold (CGD)



Silver (SI)



Operation panel is installed in a user-friendly location



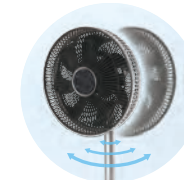
Clear indicator display



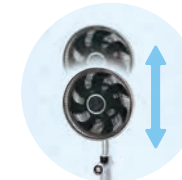
Magnet remote control in attached on the pole



Lightweight, portable with one hand  
※About 2.1kg in weight ※Comparison with FLR-251D (about 5.4kg)



Horizontal oscillation  
3angles available (30-60-90)



One-touch height adjustment



Angle adjustable: from upwards 90°to downwards 10°





Ah~ so hot!"  
Two people come back,  
Sigh and enjoy the comfort of the breeze.  
"Mom, the kitten said that she wanted to eat cold  
noodles."  
"Really? Let's eat cold noodles at noon."  
Although just chatting, it is a precious time for both.

a.m. **11:00**



## 02 Metal living fan



Blade diameter **Soft blades**

**30cm**

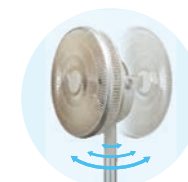
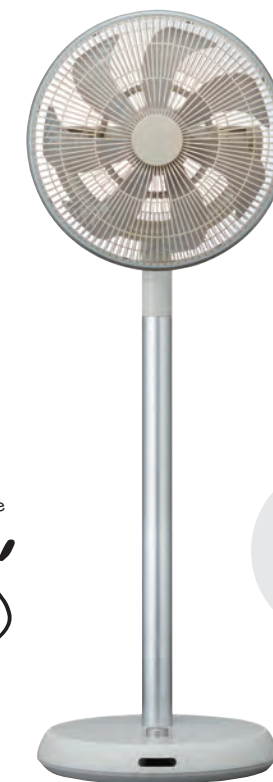
Lowest speed, Highest speed,  
with oscillation Without oscillation

Estimated electricity fee  
for operating 1 hour  
**¥0.05 Yen / 0.63 Yen**

Operating noise: Lowest

**9.2dB**

Feel soft wind  
wherever you are



Horizontal oscillation  
3angles available (30°/60°/90°)



Handle for carrying the fan  
and magnet remote control



Angle adjustable:  
upwards 70°, downwards10°



Removable center pole  
for adjusting the height



"I hate you dad."  
However, I didn't really think so in fact.

p.m. **14:00**

"Honey, you might want to say sorry to dad."  
I seem to hear the sound of the fan.  
The soft wind pushes me on the back and gives  
me the courage to apologize.



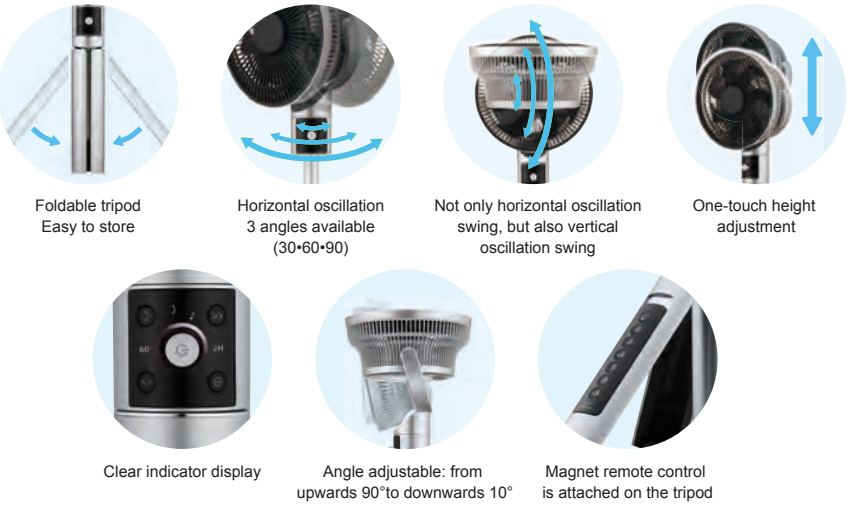
# 03 F series



Blade diameter **20cm**  
Soft blades

Lowest speed, Highest speed, with oscillation Without oscillation  
¥0.05 Yen / 0.27 Yen  
Estimated electricity fee for operating 1 hour

Operating noise: Lowest  
**11.6dB**







p.m. 15:00

"Dad apologize to you, I said too much."  
 "Dad, I'm sorry . I will keep my word."

The ice cream tasted together has become a good witness for us.  
 Inadvertently, the two people have already been immersed in the soft breeze, smiled and looked at each other.



## 04 Living fan



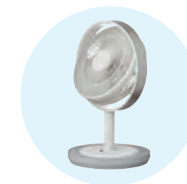
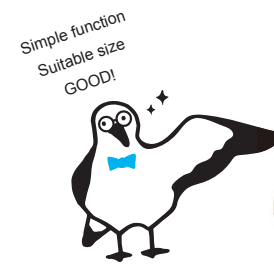
Blade diameter  
 28cm

Lowest speed, Highest speed, with oscillation Without oscillation  
 ¥0.04 Yen / 0.49 Yen

Operating noise: Lowest  
 11.3dB



White (WH)



Removable center pole for adjusting the height



Handle is integrated with the main pole



Angle adjustable: from upwards 90° to downwards 10°



Storage remote control





"Even if in quiet sleep, the child grows up gradually."  
Although it is gratifying watching the child grow up, it is somewhat lonely thinking that he will leave one day.

"Mr. Kamome, take care of the child till morning."  
Mom close the door gently and walk out of the room.



p.m. **19:00**

## NEW 05 F series



Blade diameter Soft blades

**23cm**

Lowest speed, Highest speed, with oscillation Without oscillation  
**¥0.04 Yen / 0.29 Yen**

Operating noise: Lowest  
**12.0dB**



Bendable mechanical arm can be adjusted to different heights or angles as you desired



Horizontal oscillation  
3 angles available  
(30°-60°-90°)

Magnet remote control is  
attached on the back panel

Upper operating  
part of main unit

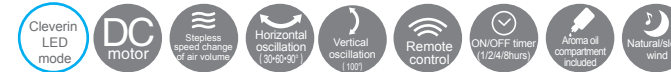
Clear indicator  
display



## 06 Cleverin circulator

Blade diameter **Soft blades**

**23cm**



Lowest speed, Highest speed, Estimated electricity fee  
with oscillation Without oscillation for operating 1 hour  
**¥0.04 Yen / 0.38Yen**

Equipped with cleverin LED  
Cleverin is a registered trademark of  
Taiko Pharmaceutical Co., Ltd.

Operating noise: Lowest  
**11.9dB**



White (WH)

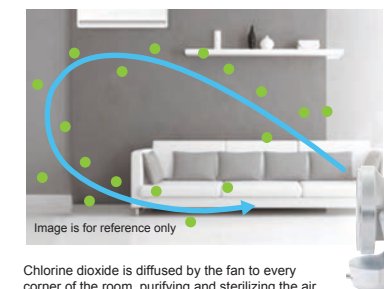


Image is for reference only

Chlorine dioxide is diffused by the fan to every corner of the room, purifying and sterilizing the air

Air sterilization Air circulation

**Taiko Pharmaceutical Co., Ltd.**

×Kamomefan

This product is the collaboration of Taiko Pharmaceutical Co., Ltd. With Cleverin and DOSHISHA with Kamomefan.



Horizontal and vertical oscillation



Clear indicator display



Replaceable Cleverin LED cartridge



Handle for carrying the fan and magnet remote control

Life of the cartridge: High mode: Around 1 month; Low mode: Around 2.5 months (when using 8 hours per day)  
[Replacement]Cleverin LED Replaceable Cartridge LED-010 Vendor: Taiko Pharmaceutical (Please buy from the dealer)

Avoid using the aroma oil when using the Cleverin mode.  
(The components of chlorine dioxide may affect the aroma of the oil.)

※Air sterilization is: When using this fan in a 6-tatami mat size room (25m<sup>2</sup>),the concentration of chlorine dioxide in the air is proved to be 0.01ppm.  
When keeping the air circulation in an enclosed area and maintaining the concentration of chlorine dioxide in the air in 0.01ppm with the chlorine dioxide generating machine, 99% of floating virus and 90% of floating bacteria are removed for 180 minutes and 120 minutes respectively. (Investigated by Taiko Pharmaceutical Co., Ltd.) Not all virus and bacteria can be removed by this fan. The concentration of the components varies in different environments.

“Mom, please drink tea.”

“Thank you!”

I hope my child is gentle and healthy.

But in fact, I found inadvertently that my daughter has grown into what I expected.

The air circulation fan is a new member of our family.

It is escorting the thriving growth of my daughter with clean and reliable ultra quiet breeze.



p.m. **21:00**





Feel gentle breeze in daily life.



A letter written in unique strokes.  
A portrait drawn with crayons.  
A rice bowl made during a trip.  
At the moment you hold it in your hands, you  
feel the emotions and stories of the person  
and become attached to it whenever you use it.

Kamomefan came into being blended with many people's ideas and  
various stories.  
We provide you not only a handy fan but also a comfortable summer.  
It is not just a simple tool, but also a family member.  
We do so hope you will have every special summer with Kamomefan.



## 01 Fseries

Model	FKLT-251D/TLKF-1251D
Blade diameter	25cm (soft blades)
Size	W 29×L 26.5×H 75~90cm
Weight ※only the main body	2.1kg
Wire length	1.8m
Power supply	DC24V
Power consumption(W)	Highest (Highest speed, with oscillation) 15W Lowest (Lowest speed, without oscillation) 1.6w
Running air volume	(Minimum) 7.5dB

Airflow speed	Stepless speed change
Oscillation	Horizontal
Oscillation angle	Horizontal 30-60-90°
Manual angle adjustment	Horizontal: 6 levels, (10° per level, 60° in total) Vertical: Upwards 90°, downwards 10° ※ Start from the front
Timer	On/off timer 1~2~4 hours
Remote control/Aroma box/ Natural/sleep wind LED (light off-dimmer mode)/auto power off function	Yes



## 04 Stand fan

Model	FKLT-281D/TLKF-1281D
Blade diameter	28cm
Size	W 36.5×L 33×H 57~93cm
Weight ※ Only the main body	3.6kg
Wire length	1.8m
Power supply	DC24V
Power consumption(W)	Highest (Highest speed, with oscillation) 18W Lowest (Lowest speed, without oscillation) 1.6w
Running air volume	(Minimum) 11.3dB

Airflow speed	4 levels
Oscillation	Horizontal
Oscillation angle	Horizontal 75°
Manual angle adjustment	Horizontal: 6 levels (10° per level, 60° in total) Vertical: Upwards 90°, downwards 30° ※ Start from the front
Timer	On/off timer 1~2~4~8 hours
Remote control/Aroma box/ Natural/sleep wind LED (dimmer mode)/auto power off function	Yes



## 02 Metal living fan

Model	FKLT-302D/TLKF-1302D
Blade diameter	30cm (soft blades)
Size	W 34×L 28.5×H 57~100cm
Weight ※ Only the main body	4kg
Wire length	1.8m
Power supply	DC24V
Power consumption(W)	Highest (Highest speed, with oscillation) 20W Lowest (Lowest speed, without oscillation) 1.6w
Running air volume	(Minimum) 9.2dB

Airflow speed	Stepless speed change
Oscillation	Horizontal
Oscillation angle	Horizontal 30-60-90°
Manual angle adjustment	Horizontal: 6 levels (10° per level, 60° in total) Vertical: Upwards 70°, downwards 10° ※ Start from the front
Timer	On/off timer 1~2~4~8 hours
Remote control/Aroma box/ Natural/sleep wind LED (dimmer mode)/auto power off function	Yes



## NEW 05 F series

Model	FKLT-232D/TLKF-1232D
Blade diameter	23cm (soft blades)
Size	W 30×L 26~57×H 63~89cm
Weight ※ Only the main body	4.4kg
Wire length	1.8m
Power supply	DC24V
Power consumption(W)	Highest (Highest speed with oscillation) 10.5W Lowest (Lowest speed, without oscillation) 1.2w
Running air volume	(Minimum) 12.0dB

Airflow speed	Stepless speed change
Oscillation	Horizontal
Oscillation angle	Horizontal 30-60-90°
Manual angle adjustment	Vertical -Upwards 90°, downwards 90° ※ Start from the front
Timer	On/off timer 1~2~4~8 hours
Remote control/Aroma box/ Natural/sleep wind LED (light off-dimmer mode)/auto power off function	Yes



## 03 F series

Model	FKLT-201D/TLKF-1201D
Blade diameter	20cm (soft blades)
Size	W 36.5×L 32×H 55.5~62cm
Weight ※ Only the main body	2kg
Wire length	1.8m
Power supply	DC24V
Power consumption(W)	Highest (Highest speed, with oscillation) 10W Lowest (Lowest speed, without oscillation) 1.5w
Running air volume	(Minimum) 11.6 dB

Airflow speed	Stepless speed change
Oscillation	Horizontal Vertical
Oscillation angle	Horizontal 30-60-90°/ Vertical 100°
Manual angle adjustment	Horizontal: 6 levels (10° per level, 60° in total) Vertical: 100° ※ Start from the front
Timer	On/off timer 1~2~4 hours
Remote control/Aroma box/ Natural/sleep wind LED (light off-dimmer mode)/auto power off function	Yes



## 06 Equipped with Cleverin LED circulator

Model	FKCS-231CD
Blade diameter	23cm (soft blades)
Size	W 28×L 21×H 39cm
Weight ※ Only the main body	2kg
Wire length	2.5m
Power supply	DC24V
Power consumption(W)	Highest (Highest speed, with oscillation) 14W Lowest (Lowest speed, without oscillation) 1.4w
Running air volume	(Minimum) 11.9dB

Airflow speed	Stepless speed change
Oscillation	Horizontal Vertical
Oscillation angle	Horizontal: 30-60-90-120° Vertical: 100°
Manual angle adjustment	Horizontal 6 levels (7° per level, 42° in total) Vertical: Upwards 90°, downwards 10° ※ Start from the front
Remote control/Aroma box/ Natural/sleep wind LED (light off-dimmer mode)/auto power off function	Yes



 **Kamome**  
www.kamome-d.jp

DOSHISHA CORPORATION.

HOME ELECTRONICS DEPARTMENT  
THE SECOND HOMOE ELECTRONICS&LIGHTING DIV  
<Tokyo > Postal code 140-0011, 1-8-10, Shinagawa-Oimachi, Tokyo, Tel. 03-3474-6840  
<Osaka > Postal code 542-8525, 1-5-5 Higashi Shinsaibashi, Chuo-ku, Osaka, Tel. 06-6121-5869

• Product specifications and designs published in the catalogue may change without prior notification. • Product color may differ from the actual products due to the printing quality. • The values in this catalog are approximate. • The size indicated in the product name may differ from the actual size. • The content in this catalog is based on the data as of April, 2018.